

THE
TOWNHAUS

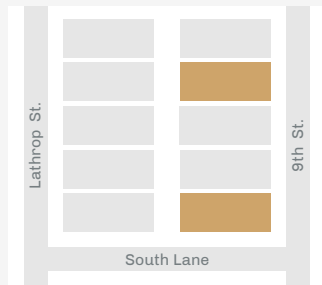
Model

9th St
Two Story

Styles Available

The Stern Package
The Viccellio Package

Location



Amenities and Features

- 15 Year 100% Tax Abatement on Improved Value
- 10' Ceilings in Living Room
- Incredible views and daylight
- Roof Decks
- Stunning wood floors available in Walnut and Maple
- Chef's kitchen
- Quartz countertops
- Gourmet Appliances
- Luxury owner's suite
- Attached 2 car garages
- High quality finishes throughout
- All exterior maintenance and landscaping is included

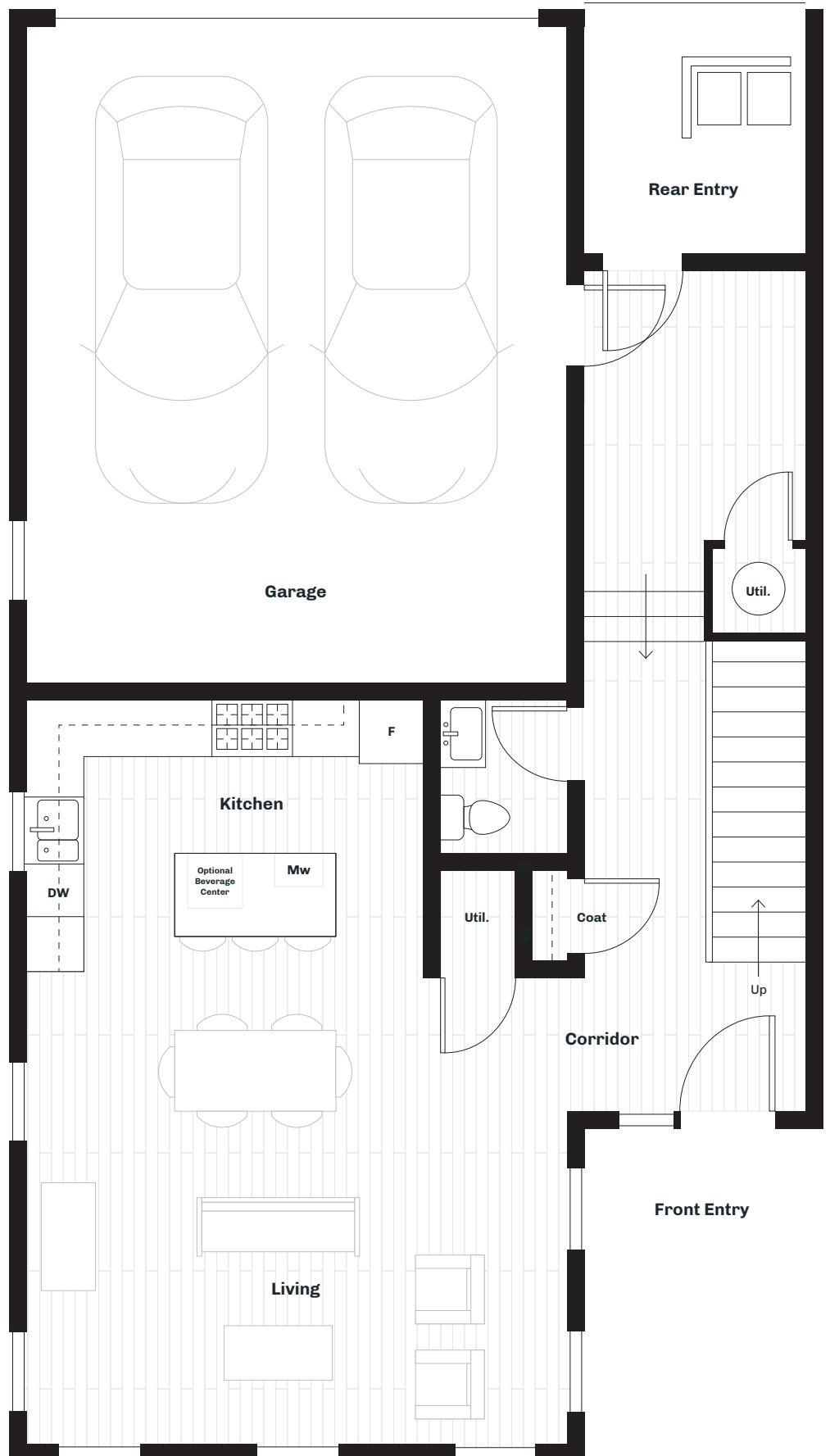
DEV

We believe that urban living can be wonderfully crafted, sexy and sustainable. Currently, we are developing beautiful, urban housing options that are embedded into the urban and historical fabric of the city. For buyers looking for something a little different, and a lot better.

devliving.com

thetownhaus.com

Windows on unit adjacent to South Lane



THE
TOWNHAUS

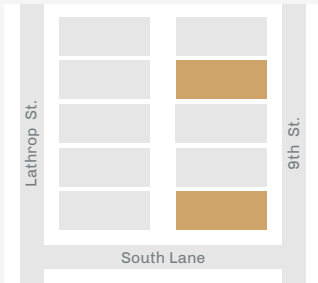
Model

9th St
Two Story

Styles Available

The Stern Package
The Viccellio Package

Location



Amenities and Features

- 15 Year 100% Tax Abatement on Improved Value
- 10' Ceilings in Living Room
- Incredible views and daylight
- Roof Decks
- Stunning wood floors available in Walnut and Maple
- Chef's kitchen
- Quartz countertops
- Gourmet Appliances
- Luxury owner's suite
- Attached 2 car garages
- High quality finishes throughout
- All exterior maintenance and landscaping is included

DEV

We believe that urban living can be wonderfully crafted, sexy and sustainable. Currently, we are developing beautiful, urban housing options that are embedded into the urban and historical fabric of the city. For buyers looking for something a little different, and a lot better.

devliving.com

thetownhaus.com

